



# UPDATES

<http://PacificRimAlliance.org/>

Pacific Rim Snow Sports Alliance

Vol. 8 • No. 4 • Winter 2004



## INSIDE THIS ISSUE

The Alliance ..... 1

### Features

- Member Profile: Jim & Betty ..... 2
- Kid's Korner..... 6
- Snowboard Strip ..... 9

### Public Affairs

- Health, Fitness, Safety ..... 3
- Industry Ski News ..... 4

Tripping Around ..... 2

- Bormio & Malta Italy 2005 ..... 7
- Steamboat in 2005 ..... 8
- Snowmass in 2005 ..... 8

### Trip Wrap Up

- LA Snow Gala ..... 5
- San Diego Winter Gala ..... 5
- San Diego Snow Jam..... 5

Sign-Up Forms ..... 9

- Membership ..... 9
- Trip Signup ..... 9

- Ski With Pride •
- Watch All Sides •
- Let It Ride •

First With Safety Awareness



Associate Member  
**NATIONAL SKI AREAS ASSOCIATION**  
nsaa.org



Membership in Pacific Rim Alliance gives you membership in LA Council of Ski Clubs [LAC], San Diego Council [SDC], Far West Ski Association [FWSA], and National Ski Council Federation [NCSF].



## the Alliance

### Bormio & Malta—

There are only a couple of spots remaining on the Bormio trip. To date, we have 45 people going to Italy. This is going to be an outstanding trip. If you would like to go, please contact me immediately. *[See page 7]*

### Two Outstanding Ski Weeks—

We have 32 people going to Snowmass and 16 people going to Steamboat. Ten of us will be doing both ski weeks. There are still a few openings, specifically we are looking for a male for Snowmass and a female for Steamboat. If you would like to go, please contact me immediately. *[See page 8]*

### Chile—

I am still working on the Chile trip for the summer of 2005. I should have news soon and will be sending out an email blast as soon as I have a flyer. There is a lot of interest for this trip, so if you would like to go, do not procrastinate.

### The Heuga Center—

Catherine and I will be participating in the Heuga Center for MS “Vertical Express” to be held in Steamboat on February 12, 2005. We are so excited to be able to participate in this race.

We need your support. If you would like to donate, you can send a check payable to “The Heuga Center” to me at 10818 Viacha Dr., San Diego, CA 92124 or follow the link on our web site, [www.pacificrimalliance.org](http://www.pacificrimalliance.org). Thanks.

### Pac Rim Web Site—

Be sure to check out our newly designed web site. It's been reorganized for easier navigation and viewing.

### FWSA Convention—

Catherine & I are working on the 2005 Far West Convention. This will be an historic event. Please contact us if you have ski or club photos related to ski history in the west. ■

## Membership has its Far West Benefits!

Check out [www.fwsa.org](http://www.fwsa.org) for a list of benefits for belonging to Far West



FWSA  
2004-2005  
Membership Card  
Expires June 30, 2005  
[www.fwsa.org](http://www.fwsa.org)

Name \_\_\_\_\_  
Club Pacific Rim Alliance  
Member ID PRA007

The bearer of this card is a member of Far West Ski Association and entitled to all the benefits associated with membership in FWSA. This card is non-transferable. Photo ID is required.

Check out our newly designed web site!

## TRIPPING AROUND

### ❖ Pacific Rim Alliance ❖

- SNOWMASS, CO. . . . . 29 Jan - 5 Feb 2005  
*Gene Fulkerson @ 858-467-9469*
- STEAMBOAT, CO. . . . . 5-12 February 2005  
*Gene Fulkerson @ 858-467-9469*
- BORMIO, Italy . . . . . 5-18 March 2005  
MALTA, Italy  
*Gene Fulkerson @ 858-467-9469*
- WATER SKIING with Radar River Rats . . . Jun-Oct 2005  
*Patricia Ortiz @ 323/651-0686 [before 9 PM]*
- CHILE, South America . . . . . August 2005  
*Gene Fulkerson @ 858-467-9469*

### ❖ Los Angeles Council ❖

- STEAMBOAT, CO. . . . . 5-12 February 2005  
*Bonnie West @ 562-699-8880*
- SALT LAKE CITY, UT. . . . . 24-28 February 2005  
*Britt Johnson @ 310-379-8972*
- SUNSHINE / BANFF, Canada. . . . . 17-24 April 2005  
*Sigrid Noack @ 310-823-1373*

### ❖ San Diego Council ❖

- BEAVER CREEK, CO . . . . . 9-14 December 2004  
*Mike Sanford @ 858-695-1442*

### ❖ Far West Ski Association ❖

- ASPEN, Colorado . . . . . 29 Jan - 5 Feb 2005  
*Gene Fulkerson @ 858-467-9469*
- JAPAN . . . . . 19-27 February 2005  
*Tucker Hoffmann @ 510-278-5900*
- ST. MORITZ, Switzerland . . . . . 12-19 March 2005  
*Tucker Hoffmann @ 510-278-5900*
- FWSA Convention, Long Beach . . . . . 9-12 June 2005  
*Catherine Ohl @ 858-467-9469*
- CHINA . . . . . September 2005  
*Tucker Hoffmann @ 510-278-5900*
- TELLURIDE, Colorado . . . . . 4-11 Feb 2006

Go to "Tripping Around" at <http://www.pacificrimalliance.org> to download color flyers for most of the events listed above.



### Membership has its NSCF Benefits

The National Ski Council Federation has new benefits for club members which include: Cellular Abroad, Bollé, East West Resorts, Rentskis.com, Crazy Heads, Geardirect.com, Breeze Ski Rental, and much more. Check out [www.skifederation.org](http://www.skifederation.org) for the complete list of benefits. Go to the "Members Only" area and input **skigroup** as the user name and **24councils** for the password. ■

## MEMBER PROFILE

### Jim & Betty Jeffery

**Jim & Betty Jeffery** both arrived home from the Grand Cayman on a State Department Medevac Aircraft. They had a wonderful vacation for three days until hurricane Ivan paid the island a visit. Ivan veered South so quickly, no one could get off the island in time, so they joined a group of Americans for a Hurricane Party at the Marriott Resort until the Marriott decided to evacuate all customers to a shelter at the local high school.



Instead Betty & Jim moved next door to the 5-star Plantation Resort and, lucky for them, were assigned a second floor condo unit. Water and electricity was shut off at 6 pm and they awoke at 6 am to find the Spanish tile roof gone along with most of the third floor.

Their rental car was crunched flat by the condo roof which caved in on it. When they opened their door to look out they were greeted by a tidal wave which rapidly wiped the entire first floor out from under them!

They spent the next 36 hours in what was left of their unit, but fared much better than the Marriott people, who went to the shelter only to have the single level shelter completely submerged by the tidal wave early that morning and found themselves being rescued by a swift water rescue team with little experience.

The third day after the storm, the U. S. government finally got word that Grand Cayman had a problem and brought in the Medevac unit. Betty had a good bump on her head which one of the Navy Doctors noticed and pulled them out of the crowd to the waiting aircraft which flew them to Ft. Lauderdale.

When they landed they were met by the Red Cross, the Miami Herald and TV crews and were astonished to hear that the Caymans had officially announced "no problems on the island and only one death."

### Life in Mammoth

Since Betty retired this year, they sold their home in LA, brought a trailer [the kind you tow] and moved to Mammoth for the winter.

They've been in Mammoth since October 22, 2004 and as you probably know arrived to record snowfall. They have already had some great ski days with good snow and warm weather although it is starting to get colder.

Of course, there is also the matter of little inconveniences such as frozen pipes which has happened at least three times. Usually the pipes thaw by noon. So Jim has another task— make the system freeze free.

Jim so far loves his job and today taught his first ski class. He also took a class that certified him to install bindings, etc., so he is already in demand. Betty, meanwhile, is selling lift tickets at Canyon Lodge. ■

## **Bollé Helmet Offer— NSCF Member Benefit**

NSCF member ski clubs can take advantage of a major discount in the cost of Bollé Helmets. NSCF members receive helmets and goggles at up to 40% savings off retail.

Bollé is launching a new ski helmet. This state-of-the-art helmet exceeds safety and performance standards.

Individual club members can check [www.bollehelmets.com](http://www.bollehelmets.com) or [www.skifederation.org](http://www.skifederation.org) [username **skigroup**, password **24councils**]. Be sure to mention membership in the National Ski Council Federation for the discount.



## **Car Jack Safety—**

Be aware of new car-jacking scheme being used at local shopping malls. You walk to your car, unlock the door, get inside, lock all your doors, start the engine, and shift into reverse. Then you look back and you notice a piece of paper in the middle of the rear window.

So, you shift into park, unlock your doors and jump out to remove the paper. When you reach the back of your car, that is when the car-jackers appear out of nowhere, jump into your car and take off!

Your engine was running, (ladies would have their purse in the car) and they practically mow you down as they speed off. These people now have your car, home address and your keys!

The police advise you to just drive away and remove the paper later.

## **In Case of an Accident—**

Many people do not know what to do [or not do] in the case of a skiing accident. Here's the short list.

- Do not remove the injured person's skis or snowboard.
- Do not move the injured person unless you are trained to do so.
- Cross your own skis uphill from the incident.

- Send someone to the nearest lift or open building to report the location, type of injury and description of the injured skier.

## **Know the Code—**

Regardless of how you decide to enjoy the slopes, always show courtesy to others and be aware that there are elements of risk in skiing that common sense and personal awareness can help reduce.

- \* Always stay in control.
- \* People ahead of you have the right of way.
- \* Stop in a safe place for you and others.
- \* Whenever starting downhill or merging, look uphill & yield.
- \* Use devices to help prevent runaway equipment.
- \* Observe signs and warnings, and keep off closed trails.
- \* Know how to use the lifts safely. ■

## **Fitness— Avoiding Sore Muscles**

Many skiers assume sore muscles are part of skiing. But muscle strain doesn't need to be part of your ski vacation.

An essential part of avoiding muscle strain is to make sure you warm up and stretch your muscles gently before you undertake any strenuous activity. Light stretching after you have exercised will also help prevent muscle soreness setting in.

During exercise our demands for oxygen go up causing us to generate more damaging free radical molecules than normal. The effect of free radicals is to cause our muscles to feel sore and achy a day or so after exercise.

Antioxidant nutrients such as vitamin C and bioflavonoids may help offset the damage that muscles endure during exercise. Taken on a regular basis these nutrients reduce the incidence of sports injuries and shorten the time it takes to recover from a muscle injury. Take 1000 mg (milligrams) of vitamin C and bioflavonoids, 2-3 times a day.

But of course, the best way to avoid those sore muscles is to get in shape before you go skiing. Skiing to get in shape is never a good idea. ■

# INDUSTRY

## Ski News

by Catherine Ohl

### Big Bear Mountain Resorts—

At Big Bear Mountain Resorts you get more options than ever before! One lift ticket is good for both resorts, a complimentary shuttle runs between the resorts. Two full-service resorts means 23 lifts, 430 developed acres, 50+ runs and the most amazing collection of parks, pipes and jibs around.

As an additional bonus, Bear Mountain only passes are valid for Snow Summit night sessions so snowboarders can ride world-famous Westridge almost every Friday and Saturday night, all season long!

### Tamarack, Idaho—

Tamarack Resort, America's newest, all-season destination resort, announced a grand opening date of December 15, 2004, and outlined an array of winter recreation opportunities and ski-in, ski-out lodging available to Tamarack visitors this winter season.

Ski and snowboard enthusiasts will have access to 25 downhill runs via five lifts, including the Tamarack Express and Summit Express [both high-speed detachable quads] which will carry skiers and riders to Tamarack's 7,700-foot summit and provide a continuous 2,800-vertical-foot descent to the base area.

Tamarack Resort, the first all-season resort to be permitted in the US in 22 years, has received national attention for having not one, but three spectacular crown jewels: a world-class ski mountain, a Robert Trent Jones II signature golf course and the beautiful Lake Cascade.

### New Air Service for Kelowna—

Great news for winter visitors to Big White Ski Resort and Silver Star Mountain Resort. As of December 17, 2004, Air Canada will replace its Dash 8 service with an A320 jet on its 11:15 am departure from Vancouver to Kelowna.

The A320 will hold up to 140 passengers and provide all the comfort and speed of jet service. The Airbus will return from Kelowna at 12:50pm arriving back into Vancouver at 1:40pm each day in time to make easy connections to the US.



Courtesy Tamarack Resort

### The Canyons—

Buy two or more days of skiing at The Canyons Resort, and you'll get an additional day on the slopes for free. In order to redeem this offer, guests must pre-register at [www.thecanyons.com/freedaydeal](http://www.thecanyons.com/freedaydeal). After registration, participants will access an online certificate. By presenting the certificate at the ticket window, guests can redeem an additional day of skiing with the purchase of a multi-day ticket.

### Early Ski Area Openings—

Ski areas have been opening at a record pace across the West as a series of storms and favorable snowmaking weather have cloaked the mountains in the white stuff. Loveland, CO, was the first to open on October 15, 2004. Arapahoe Basin, CO, followed on October 22, 2004 for its earliest opening ever.

California has been whacked by a series of storms (with more on the way). Bolstered by nearly five feet of natural snow, Mammoth opened October 21, 2004 with top-to-bottom skiing. Boreal Ridge also opened October 21, 2004 with three feet of new snow.

And that was just the beginning for California. Kirkwood received more than three feet of snow and opened October 24, 2004. Other early openings for October 29-30, 2004 include Squaw Valley, Sugar Bowl, Mountain High, Sierra-at-Tahoe, and Tahoe Donner.

### Deer Valley—

Deer Valley has invested \$8 million in improvements for the 2004-05 season. Two new chairlifts, the Judge Lift and the Silver Strike Express, have been installed in the Flagstaff area, also home to two new intermediate ski runs. The runs are accessible from the new Silver Strike Express, Quincy Express, Red Cloud and Northside Express lifts. Additional glade skiing has been added in both the Empire Canyon and Flagstaff areas of the Resort.



Courtesy Park City Mountain Resort

### Park City Mountain Resort—

Park City Mountain Resort has replaced its beginner lift with a new high-speed, four passenger detachable lift. The new lift will give beginner snowboarders and skiers a better learning environment and more efficiently move riders and skiers out of the lower base area of the Resort.

### Earthquake Threatens Japan's Ski Industry

The recent Niigata Chuetsu Earthquake on October 23, 2004 has reportedly led to a third of a million cancellations of ski holiday bookings in Japan's famous "snow country" region this winter, resulting in an estimated 5 billion yen loss to the area's economy. ■

# SAN DIEGO WINTER GALA

November 6, 2004

Congratulations to **Gene Fulkerson** and **Cheryl Riess** [North Island] for being named San Diego Council's Man & Woman of the Year. Gene & Cheryl will be representing San Diego at the Far West Convention in Long Beach on June 9-12, 2005. It was a close competition. The contestants [pictured top right] are **Ken Zuorro** [North Island], **Cheryl Roy Heilpern** [Don Diego], **Sara Tully** [Don Diego], **Helen Harris** [2003 Women of Year], **Rusty Etzel** [Torrey Pines], **Gene**.

The annual Winter Gala was held at the Hilton Harbor Island. As a special request, **Mary Trimmins** [pictured center with Gene] returned as our guest chef. She prepared an awesome menu which included mixed greens with walnuts, raisins, blue cheese and balsamic vinaigrette. There was a choice of grilled chicken breast or baked salmon with sweet & sour Chambord sauce. Her dessert, the piece de resistance, was a white chocolate tart with Chambord Coulis and mixed berries.

In addition to **Chambord** as one of our very generous sponsors, the club men and women of the year and the judges were given some great prizes. **Ranchcraft** gave Gene & Cheryl each a \$100 gift certificate. **Mammoth Mountain** gave all the candidates lift tickets. **Pravda** donated 750 ml bottles of its very best vodka. In addition, all contestants and judges were presented with a Pravda vodka tasting kit.

Other highlights of the evening included the awarding of the annual Joe Harris award to **Connie Smith** [Don Diego]. And of course, we danced to the sounds of vintage rock 'n roll by the returning **Cat'illics**.

Special thanks to **Helen Harris** for doing a wonderful job with the Men & Women of the Year, **Patricia Ortiz** for registration, and the judges [pictured bottom right] **Robb Kirschenmann** [Action], **Connie Smith** [Don Diego], **Rick Bonnett** [North Island], **Catherine Ohl** [Pac Rim] and **Brad Davis** [Torrey Pines]. ■



# Los Angeles Snow Gala

The Los Angeles Snow Gala was held at the Marina del Rey Hotel on November 8, 2004. **Elaine Guidotti** [Tri Valley] and **John Perkins** [Conejo] were crowned LAC Woman and Man of the Year. The clubs Men & Woman [pictured left below] are **Eric Riccio** [Tri Valley], **Shemona Lynn Richards** [4 Seasons], **Sandy Langston** [Century City], **Larry Davis** [Century City], **Karen Finfer** [Unrecables], **Linda Mero** [Singles], **John Dwight** [Singles], **David Chambers** [4 Seasons], **Elaine, John, John Mahany** [Auslich], **Donna Estrin** [Auslich], and **Steve Lefkowitz** [Unrecables].

Thanks to **Celeste Coleman**, chair, **Bonnie West**, Man & Women of the Year, and **Ed Knott**, registration, for all their hard work. Thanks to the judges [pictured right below] **Toni Dudley** [4 Seasons], **Debbie Russell** [Tri Valley], **Jessica Freeman** [Singles], **Mary Albritton** [Auslich], **Karen James** [Edelweiss], **Ray Craig** [Conejo], **Candy McKnight** [Century City], **Iris Williams** [Snow Busters], and **Inge Hobo-Scheinfarb** [Unrecables]. ■



More photos available at [www.pacificrimalliance.org](http://www.pacificrimalliance.org)

# SAN DIEGO SNOW JAM

November 11-14, 2004

The San Diego Snow Jam was packed. **Helen Harris** did a great job coordinating all the workers for the council booth. **Gene Fulkerson** & **Catherine Ohl** worked the booth for Pac Rim on three of the four days.

We were fortunate to have the attention getting FWSA convention banner in our booth. Pictured below with the banner is **Judy Schulethis**, San Diego Council President and **Helen Harris**, Snow Jam coordinator. ■



# KID'S KORNER

## 4 kids & grandkids

### Budget—

Budgeting for kids' equipment and still being able to afford the lift tickets can be a daunting task, but with a few creative tactics, you should be able to balance the load.

Common hints include buying kids' equipment at ski-swaps, consignment stores, or lease/buyback programs at retail shops, and buying new only for the oldest child.

For slopeside savings, always call ahead to find out about special promotions and pricing. At many resorts, kids of a certain age ski free, stay free and even fly free.

### Ski—

Popular adult "shaped skis" have been shifted to kid sizes. With a narrow waistline, wide tips and tails. These skis are designed for use in shorter lengths than traditional models, are softer and turn more easily, while not creating excess pressure on your child's legs.

### Boots—

Boots come in traditional American sizes and also "mondo" which is simply the length of the boot in centimeters.

With one pair of medium-weight or light-weight socks there should be enough room for the toes to wiggle. Taking the liner out of boots during try-on is a good idea for parents to be sure of the proper fit. [You should be able to put two fingers behind the heel when the toes touch the front of the boot.]

### Bindings—

Bindings are designed to release when you fall. The brakes stop the ski from traveling down the mountain. Skier weight and ability determine the binding settings, measured in "DIN," which stands for Deutsche Industrie Norm.

As weight and skiing ability increase, the higher the DIN will be set. Small children's bindings should be good quality and have a DIN setting that goes low enough (down to 0.5). DINs on bindings should be set by a ski technician.

### Helmets—

Children and adults should wear protective helmets for safety and warmth. They should fit snugly, and you should be able to see peripherally and hear normally. Goggles should fit securely over the helmets.

### Poles—

Initially, young kids will not use poles because they are cumbersome and distracting. Smaller kids tend to use their upper body for balance and as a turning mechanism.

As kids grow taller and more experienced, they will need them to push across flats. Finding the proper length is simple. Have the child stand with the pole grips in their hands, bottoms touching the floor, elbows should create a 90 degree angle, forearms parallel with the floor.

### Clothing—

A warm, dry child is a happy rider. Outfitting a growing child every ski season can be a drain on the wallet, but investing in a warm ski jacket and layering smartly is critical to children's skiing success. ■



Courtesy Keystone



Courtesy Crested Butte



Courtesy Big Mountain



## For Kids Only—

How about skiing and boarding this winter with your family, and you get to ski/board for free!? If you're in the 4th, 5th or 6th grade (or born in 1993, 1994 or 1995), you can apply for a California Snow Passport.

The California Snow Passport has pages of coupons for lift tickets, trail passes, special offers for ski and board lessons and equipment rentals at 30 participating California and Nevada resorts. Apply now. There is a service fee of \$18. Passport applications are available by going to <http://www.californiasnow.com/passport.htm>. ■



# Bormio, Italy

March 5 - 13, 2005

World on Skis



Hotel Rezia\*\*\*\*

### Package Includes—

- Round Trip Air from LAX to Milan via Delta [one stop in Atlanta]  
- Flights available from other airports [may be an additional cost]
- Complimentary In-Flight Meals & Movies
- Luxury Coach Transfer from Milan
- Seven Nights Lodging [private bath, dbl. occ.]  
- **Hotel Rezia\*\*\*\*** Standard Room  
- Some superior and single rooms available upon request
- Seven Breakfasts & Seven Dinners
- The Usual Parties, Souvenirs and much More!

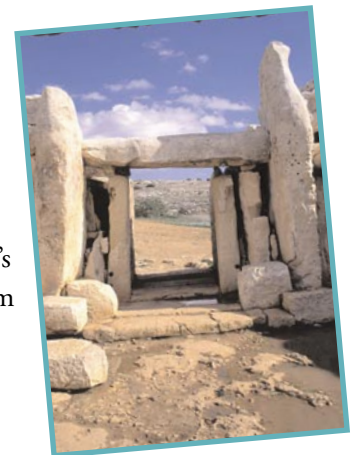
**\$1,189**

### Price Does Not Include—

- US and Foreign Departure Fees, PFCs [estimated \$90]
- Return Extensions Up to 30 Days, Subject to Availability [\$50+]
- 6-Day Ski Pass [\$200]
- Excursions from Bormio

### Malta, March 13-18, 2005, for \$759 –

- Air & Ground Transfers
- Air Tax of \$37
- 5 Continental Breakfasts
- 4 Nights Malta Golden Tulip Vivaldi \*\*\*\* in St. Julian's
- 1 Night Rome Hotel Capo D'Africa\*\*\*\* near Coliseum



### For Reservations & Information—

- Contact **Gene Fulkerson** at 858-467-9469
- Send \$400 deposit payable to Pacific Rim  
10818 Viacha Dr., San Diego, CA 92124

Cancellation Policy will apply

Must be a Member of Pacific Rim Alliance

## WARREN MILLER MOVIE SCHEDULE— SO. CAL.

You won't want to miss Warren's latest movie "Impact." Here's the schedule for LA, Orange & San Diego.



Brentwood	Wadsworth Theater	Sat, Dec 4	8PM
Long Beach	Carpenter Center	Wed, Dec 1	8PM
Pasadena	Pasadena Civic Auditorium	Fri, Dec 3	8PM
Redondo Beach	Redondo Union High	Fri, Dec 10	8PM
Thousand Oaks	Fred Kavli Theatre	Thu, Dec 9	8PM
Irvine	Irvine Barclay Theater	Thu, Dec 2	6PM / 9PM
Laguna Beach	LBHS Artists Theater	Sun, Dec 5	5PM / 8PM
Carlsbad	Village Theater	Fri, Dec 10	6:30PM & 9:30PM
Encinitas	La Paloma Theatre	Wed, Dec 8	8PM
Encinitas	La Paloma Theatre	Thu, Dec 9	6PM & 9PM
La Jolla	Museum of Cont Art	Sat, Dec 11	6PM & 9PM
La Jolla	Museum of Cont Art	Sun, Dec 12	5PM & 8PM



Courtesy Steamboat by Larry Pierce



Courtesy Steamboat by Larry Pierce

LA Council is going to **February 5-12, 2005**  
**Steamboat®**



**Package Includes—**

- Round Trip Air LAX to Hayden for **\$325** [Air available from San Diego & other Airports]
  - LAX-HYN UA 908/7011 February 5, 2005 9:05 AM - 4:47 PM
  - HYN-LAX UA 5938/245 February 12, 2005 10:20 AM - 2:57 PM
- Round Trip Ground Transfer from Hayden
- Seven Nights **Ski-In/Ski-Out** Lodging [dbl. occ.]
  - **Thunderhead** 2Bd/2Ba Condos for **\$899 + air**
  - **Torian Plum** 2Bd/2Ba Condos for **\$1,149 + air**
- Five of Six Day Lift Ticket
- Welcome Reception,
- Mountain Picnic, 2 NASTAR Races [4 runs total]
- Farewell Banquet & Dance
- Registration, Activity Fees, Taxes
- The Usual Parties, Souvenirs and much More!



*Room for one female!  
Wait list being taken.*

**For Reservations & Information—**

- Contact **Gene Fulkerson** at 858-467-9469
- Send \$200 deposit payable to Pacific Rim  
10818 Viacha Dr., San Diego, CA 92124

**Two Outstanding Ski Weeks!!!**

**ASPEN SNOWMASS**  
 FWASA Ski Week January 29 - February 5, 2005

**Package Includes—**

- 7 Nights **Ski-In/Ski-Out** Lodging in **Snowmass** [Double Occupancy]
  - **Terrace House** 2Bd/2Ba Condos for **\$849\* plus air & transfer**
- Round-Trip Air from LAX
- Transfers to and from Airport
- 5-of-7-Day Lift Ticket at Four Fantastic Mountains
- Welcome Party Sunday Evening
- 3 Races, Mountain Picnic, 2 Après-Ski Parties
- Farewell Banquet & Dance
- Registration, Activity Fees, Taxes
- The Usual Parties, Souvenirs & much More!



*Room for one male!  
Wait list being taken.*

**Reservations & Information—**

- Send \$200 deposit payable to Pacific Rim  
Gene Fulkerson, 10818 Viacha Dr., San Diego, CA 92124
- Contact **Fay Mumbauer** or **Gene Fulkerson**  
323.773.5330 858.467.9469  
fmum@msn.com gene@pacificrimalliance.org



Courtesy Aspen/Snowmass by Matt Powers



Courtesy Aspen/Snowmass by Biege Jones

CST 2038064-40

Cancellation Policy will apply

Must be a Member of Pacific Rim Alliance

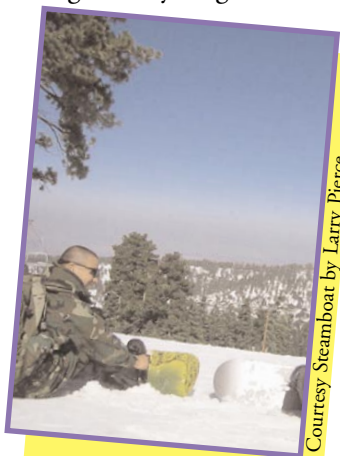


# SNOWBOARD STRIP

## Shredders Head for Mtn. High—

Southern California has everything shredders love right now: sun and snow, and even snowbunny girls riding in tank tops. The mountains are capped with natural snow and the resorts are all open. And yes, the parks are already shaping up! Mountain High has been open for a week. As usual, the sun is kicking up in Wrightwood and the park crews are hurrying to get the slopes covered with obstacles.

Odds are there will be almost no skiers, a good boy-to-girl ratio, and it'll be so warm you don't even need gloves. You might even spot local crusher Cory Cronk. Everyone is charging at Mt. High, you should, too. ■



Courtesy Steamboat by Larry Pierce

## Membership Application 2004-05

ALL Pacific Rim Alliance attendees must be a member to participate in one of our trips. Our membership year is from 1 July 2004 through 29 September 2005.

To join the Pacific Rim Alliance, fill out the following and send with your check [payable to Pacific Rim Alliance] to:

PACIFIC RIM ALLIANCE  
10818 VIACHA DR., SAN DIEGO, CA 92124

NAME[S]: \_\_\_\_\_

HOME ADDR: \_\_\_\_\_

CITY: \_\_\_\_\_ STATE: \_\_\_\_\_ ZIP: \_\_\_\_\_

E-MAIL ADDR: \_\_\_\_\_

HOME PHONE: \_\_\_\_\_

WORK PHONE: \_\_\_\_\_

FAX LINE: \_\_\_\_\_

DATE OF BIRTH: \_\_\_\_\_

Indicate Membership [Includes membership in FWSA]

- \$8 INDIVIDUAL Membership  
 \$10 FAMILY Membership—Significant other, spouse, children, friends residing at same residence qualify

WAIVER: I am aware that participation in the Pacific Rim Alliance events has, in addition to the usual risks, dangers and hazards associated with travel, snowboarding, alpine, Nordic, Heli & off-piste skiing, certain additional risks, dangers and hazards including, but not limited to: boarding, riding and disembarking ski lifts; changing weather conditions; exposed or hidden natural or man-made objects; avalanches; failure to ski or ride safely or within one's own ability; and negligence on the part of other skiers and boarders, the organization or their staff. I freely accept and fully assume all such risks and danger and the possibility of personal injury, death, property damage or loss, resulting therefrom.

Signature

Date

Signature

Date

## Pacific Rim Trip Sign-Up Form

[You must be a current member to sign up for this trip— include Dues and Membership Application if not a member]

PRINTED NAME[S] \_\_\_\_\_

STREET ADDRESS \_\_\_\_\_

CITY \_\_\_\_\_

STATE \_\_\_\_\_

ZIP \_\_\_\_\_

HOME PHONE \_\_\_\_\_

FAX \_\_\_\_\_

E-MAIL \_\_\_\_\_

**DEPOSIT DUE:**

- \$200 / person for Steamboat, CO     \$200 / person Snowmass[Aspen]     \$400 / person for Bormio, IT

—Send this Form with Your Deposit Made out to Pacific Rim Alliance to:

Gene Fulkerson, 10818 Viacha Dr., San Diego, CA 92124

# SKI QUIZ

by freelance writer Walter Roessing

If you want to test your ski I.Q., take the following quiz. The answers can be found at the bottom of this page.

1. What ski resort is owned by actor Robert Redford, who skis there frequently? a) Sun Valley, b) Steamboat, c) Stratton, d) Sundance.
2. Which ski area is so big its lifts and slopes are spread over two states? a) Heavenly, b) Aspen, c) Big Sky, d) The Big Mountain.
3. What state ranks No. 1 in the total number of ski areas? a) Colorado, b) Vermont, c) New York, d) California?
4. Where does the U.S. Ski/Snowboard Team train and live? a) Sun Valley, b) Park City, c) Squaw Valley, d) Lake Placid.
5. What's the last North American city to host the Winter Olympic Games? a) Denver, b) Calgary, c) Salt Lake City, d) Lake Placid.
6. Ski magazines annually rate what ski area as having the best on-mountain food and restaurants? a) Beaver Creek, b) Vail, c) Aspen, d) Deer Valley.
7. Club Med opened a new ski village at what Colorado resort? a) Copper Mountain, b) Breckenridge, c) Crested Butte, d) Telluride.
8. How many states have ski areas? a) 39, b) 41, c) 43, d) 45.
9. Snowboarding got its start at what New England resort thanks to Jake Burton Carpenter? a) Sunday River, b) Mount Snow, c) Stratton, d) Stowe.
10. What large Western city is the closest to seven major ski resorts? a) Denver, b) Seattle, c) Salt Lake, d) Sacramento.
11. Where is the continent's longest night-skiing slope? a) Squaw Valley, b) Keystone, c) Park City, d) Lake Louise?
12. Name North America's only resort where you can ski year-round on a perpetual snowfield: a) Whistler, b) Banff, c) Killington, d) Timberline.
13. What Colorado ski area has lifts within walking distance of a special ski train that stops there every weekend? a) Winter Park, b) Aspen, c) Vail, d) Breckenridge.
14. Where was the world's first chairlift installed in 1936? a) Sun Valley, b) St. Moritz, Switzerland, c) Aspen, d) Yosemite.
15. What ski area holds the world record for the most snow in a single ski season? a) Kirkwood, b) Wolf Creek, c) Big Sky, d) Mount Baker.
16. Which U.S. ski area boasts the greatest number of lifts? a) Steamboat, b) Vail, c) Mammoth, d) Squaw Valley.
17. What North American mountain has the biggest, lift-served vertical drop at 5,280 feet? a) Jackson Hole, b) Killington, c) Taos, d) Blackcomb.
18. Most ski-slope accidents happen in the a) morning, b) mid-day, c) after lunch, d) late afternoon.
19. What North American site has hosted two Winter Olympics? a) Denver, b) Lake Placid, c) Squaw Valley, d) Calgary.
20. Skier-visits in the U.S. reached a record high in 2000 thanks to great snow conditions. The total was a) 57.3-million, b) 56.3-million, c) 55.3-million, d) 54.3-million. ■



Sun Valley Single Chairlift by Roy Atkeson

## Answers to the Ski Quiz

1. d) Sundance, Utah
2. a) Heavenly, California/Nevada
3. c) New York, 54.
4. b) Park City, Utah.
5. b) Salt Lake City, Utah.
6. d) Deer Valley, Utah.
7. c) Crested Butte, Colorado.
8. a) 39.
9. c) Stratton, Vermont.
10. c) Salt Lake City, Utah.
11. b) Keystone, Colorado.
12. d) Timberline, Oregon.
13. a) Winter Park, Colorado.
14. a) Sun Valley, Idaho.
15. d) Mount Baker, Washington, 1,116 inches or 93 feet in 1999/2000 season.
16. b) Vail, Colorado, 33.
17. d) Blackcomb, one of the twin mountains that comprise British Columbia's Whistler Resort.
18. d) Late afternoon.
19. b) Lake Placid, New York.
20. a) 57.3 million.

# Celebrate 75 years of Snowsport History

**Far West Ski Association Convention**

**Long Beach Westin**

**June 9-12, 2005**



**www.fwsa2005celebration.org**

photo courtesy Big White Ski Resort



Sponsored by

ASPEN SNOWMASS  
THE POWER OF FOUR

INTRAWEST

Ski Resort  
Baldy Mountain  
Snowmass  
Ski Area  
Ski Area

Big White

STAN  
The Colorado Club

snowbasin  
A SUN VALLEY RESORT

Common Recreation League

BIG  
MTN

The Los Angeles Council of Ski Clubs is already hard at work planning the 2005 FWSA Convention and 75<sup>th</sup> Anniversary Celebration to be held at the Westin in Long Beach on June 9-12, 2005. Thanks to our generous sponsors this is going to be an extraordinary event.

## Special Guests—

As a special treat, **Michael Adams**, son of **Ansel Adams**, is scheduled to present his father's ski photographs. Guest celebrities planning to attend include **Jimmie Heuga**, **Billy Kidd**, **Dave & Roma McCoy**, **Nancy Greene**, and **Deb Armstrong**.

## History Exhibits—

The focus of the weekend will be the display of our ski history. The exhibits will be impressive as a number of national ski museums, ski resorts, and clubs have already committed to display their history of skiing.

Museums that will be participating include Western Skisport Museum, Mammoth Ski Museum, US Ski Hall of Fame & Museum, Mt. Hood Cultural Center and Museum, and the California Ski Library.

Resorts participating include Red Mountain, Snowbasin, Vail, Steamboat, Aspen/Snowmass.

## Your Participation—

Anyone who has been involved in the evolution of the Far West Ski Association will be welcome to attend. If you would like to participate or have any old photos [electronic or photos/negatives we can borrow for scanning], please contact **Catherine Ohl** at 858-467-9469 or [ohl@acatmeowz.com](mailto:ohl@acatmeowz.com).

If you are interested in signing up for a booth for the display of snowsport history, contact **John James** at 818-249-5982 or [sjxcski@sbcglobal.net](mailto:sjxcski@sbcglobal.net).

## Convention Highlights

- Special 75<sup>th</sup> Anniversary Celebrations
- History Reunion, Reception & Exhibit
- Silent Auction & Travel Expo
- Saturday Awards Luncheon & Dinner Dance with Celebrity Guest Speakers
- FWSA Business Meeting

## Reservations at The Westin Long Beach

- \$129 before May 15, 2005  
- (Single, double, triple, quad occ)
- Call 800-228-3000, say you're with Far West Ski Association
- Visit [www.FWSA2005Celebration.org](http://www.FWSA2005Celebration.org)
- Room rate available 3 days before/after event

## Optional Fun Activities

- Thursday Pub Crawl
- Friday Golf with the Celebrities for \$85
- Friday Queen Mary guided tours with lunch for \$45
- Friday Aquarium guided tour with lunch for \$40
- Friday Kayaking and lunch at Alamitos Bay for \$30

## Nearby Attractions for the Whole Family

Aquarium of the Pacific, The Queen Mary, Catalina Island, The Pike at Rainbow Harbor, Shoreline Village, Disneyland & California Adventure, Knott's Berry Farm, Universal Studios, Beverly Hills

## Information

- **Catherine Ohl**, [ohl@acatmeowz.com](mailto:ohl@acatmeowz.com) or 858-467-9469
- [www.fwsa2005celebration.org](http://www.fwsa2005celebration.org)

## TAKE A LESSON IN SNOWMASS

by Eileen Tschernenko, Auslich Ski Club

Eileen and her husband Stan are currently working as part-time Ski Pros at Aspen / Snowmass. Whether or not you are planning a trip to Aspen / Snowmass with Pac Rim, here's some insider information.

I'm sure you have heard that Buttermilk is the easiest, Snowmass the biggest and most versatile, Aspen the bumpiest, and Highlands the steepest. This affects lessons offered. Beginner-Novice lessons are only offered at Snowmass and Buttermilk. Only lessons level 5 and above are offered at Aspen and Aspen Highlands.

### Small Group Lessons—

Classes are called “Small Group Lessons” for a reason— that means 3 to 4 people in a class. Those 3 to 4 people will be at the same ability level. Of course the option of private lessons is available and you can have up to 5 in a private lesson.

At all levels, show up for a lesson the next day and the same Ski Pro will teach you so you can start right where you left off.

This next item is awesome but seldom happens. Should you pair up with some folks you know for a ski class (remember same ability) and the whole class wants to ski Highlands the next day, your Ski Pro from Snowmass can join you there for the next day's lesson. Yes, you can form a group lesson with your desired group but if there is a split in ability, the Ski Pro will have to select terrain suitable to the most struggling member.

### The Best Deal Around—

Beginning Level 1 classes through Intermediate Level 4 classes offer a package deal of lesson, lift ticket and equipment (short skis of 120cm-140cm). A one-day lesson costs \$125 with \$99 unlimited extensions. Aspen-Snowmass really wants you to be a skier! The new short skis make skiing so much easier. Last year I watched an 80-year-old learn how to ski!!!

### Beginners—

Anyone you know who has ever thought about learning how to ski should be go to Aspen! The Ski Pros teach a “direct to parallel” method— that means NO WEDGE. Teaching is terrain-based, meaning easy terrain and keeping each guest within a comfort level to promote learning.

At Snowmass, there are three teaching areas to use for the gradual progression to the first Green run off the Fanny Hill Chair. The commitment to quality



teaching is best demonstrated by a story: I had a class of three and one person just wasn't getting it. The coordinator was right there to get another Ski Pro to go one-on-one with that person to make sure they became a skier and I could insure my other two guests were not held back.

### For the Haven't Skied in Years—

The same terrain-based teaching principles are used to re-introduce you to skiing or develop your new skills within your comfort zone. Of course, most people who have skied before will have a wedge and the Ski Pros work with it.

### For the Intermediate Skier—

If you are looking for that break-through, take advantage of the wide open runs to relax and improve. For skiing adventure but not including double black runs there's the blue run called “Rocky Mountain High” down from the long ride on the Cirque Poma at Snowmass. The High Mountain traverse from the Poma is awesome IF you follow the turn off at the markers to High Alpine to avoid the double black runs of Hanging Valley.

### For the Expert Skier—

You may want to consider a Ski Pro to tour you into the Cirque, Hanging Valley and/or

Burnt Mountain at Snowmass or Highlands Bowl (hiking required) so you can find the best snow on the first go-round. The Ski Pro will know if you are ready.

### Enjoy the Power of Four—

All of the mountains offer restaurants and cafeteria style eating, all with great food.

If Aspen Mountain seems like it will be a struggle for you, plan to take the gondola down at the end of the day so you can still enjoy runs like Dipsy-Doodle, the views towards Highlands Bowl, and maybe spotting a star or two.

Aspen Highlands is enjoyed by many green-groom skiers although you'll most likely repeat runs. If you can ski blue runs, go to the top for the view. Cruisers, steeps, off-piste— Aspen Highlands has it all.

And don't forget snow cat skiing is offered on the back of Aspen. ■

### Backcountry Skiing for Intermediate Skiers—

Backcountry skiing offers vast expanses of soft, consistent powder snow in remote and spectacular high-mountain settings. Often considered the domain of hardy and self-reliant ski touring enthusiasts, backcountry skiing is now easily accessible to intermediate-level snowcat skiers.

Snowcat skiing is typically much more affordable than helicopter skiing and can be more adaptable to skier ability. Also, it requires no special equipment or backcountry experience. However, good physical fitness is desirable, especially in skiers with little powder snow experience.

Guides are expert in finding “lines” for skiers of differing ability. Better skiers might enjoy some “steeps” or “pop” off bumps while others in the group are guided on a more “mellow” line. Everyone has ample opportunity to challenge themselves. ■

-Lockie Brown  
backcountrywintervacations.com



1930 California Race

## California Ski Association—

The California Ski Association (CSA) came into being as a direct result of California losing the 1932 Winter Olympic Games to Lake Placid, NY. Both Yosemite and Big Pines made a bid for the Olympics but the world saw California as the “land of eternal sunshine” and couldn’t believe there was any snow in the state.

In addition, many in California didn’t want the world to know they had snow because they thought it would hurt tourism. But skiers in the state wanted an opportunity to secure a sanctioned meet and invite the world to experience what California had to offer.

To do this, California needed a statewide organization affiliated with the National Ski Association.

A special meeting of the Winter Sports Committee of the California State Chamber of Commerce was held on Tuesday, October 7, 1930 at the Palace Hotel in San Francisco. **Wendell Robie** of Auburn Ski Club was elected president of the newly formed California Ski Association.

Others elected were **Frank Deuprey** of the California State Chamber of Commerce, Secretary; **W. A. Wadsworth** of Los Angeles, Treasurer; Vice Presidents: **Don Tresidder**, Yosemite; **Herbert Fleishhacker, Jr.**, San Francisco, for the northern part of the State; **George L. Eastman** and **J. B. Hanson** of the Viking Club, both of Los Angeles, for the southern part of the State.

The election of the directors was left to the four originating ski clubs— Truckee Ski Club, Auburn Ski Club, Yosemite Winter Club and Viking Ski Club of Los Angeles— to name two each from their respective clubs.

A resolution was passed asking that there be an entrance fee of \$20 for each club desiring to affiliate with CSA. California was admitted into the National Ski Association on December 14, 1930.

In 1931, **Wilbur Maynard**, representing CSA, went east and was successful in securing the NSA Championships in Jumping and Langlauf (cross-country) for 1932. CSA organized its first

annual championships on February 21-23, 1931 at the Olympic Hill of the Lake Tahoe Ski Club near Tahoe City. This event was sanctioned by NSA and used as the “California Olympic Tryouts” for the 1932 US team.

## Ski Patrol—

In the winter of 1936, the Auburn Ski Club instituted the first ski patrol unit in California, after a skier froze to death on Mt. Lincoln above Donner Pass. The patrol was formed as an embryo organization with the Auburn Volunteer Fire Department.

The five members of the patrol— **Harry Rosenberry**, **Al Bequette**, **Herb Clegg, Jr.**, **Roy Sands**, and **George Gianni**— completed advanced first aid and instructor courses at their own expense in Sacramento. The City of Auburn purchased a resuscitator and other first aid equipment for the patrol. The men aided stricken or lost skiers and checked trails for people and obstacles.

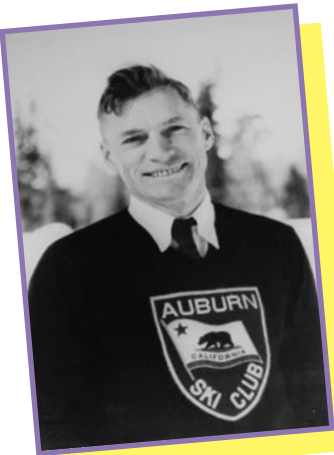
In 1938, the NSA formed the National Ski Patrol System (NSPS) and the Auburn Ski Club became affiliated with the national organization. Far West patrols developed a rescue toboggan equipped with first aid supplies that was later adopted by the NSPS and other skiing associations throughout the US.

In 1938, **Don Tresidder** of Yosemite was the first Far West patroller inducted into the NSPS and was assigned number 14. In 1941, **Dorothy McClung Wullich** of San Diego Ski Club was named the first woman ski patroller and assigned number 1.

## World War II—

At the CSA Convention at Fairmont Hotel in San Francisco, CA on October 18, 1942, the current board, led by President **Dr. Frank Howard**, voted to freeze all offices, even if the officer was serving in the war. CSA asked that there be no tournaments. There would be no sanctioned events, no conventions, and no approved travel until the war was over. In addition, CSA paid club dues to NSA for those clubs not able to do so.

*To be continued*



Wendell Robie



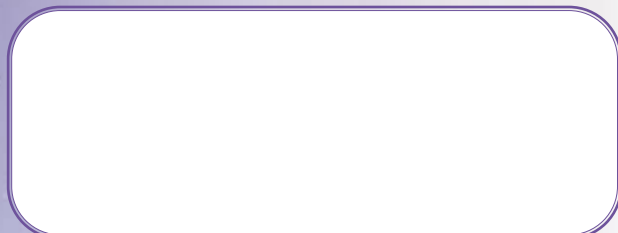
Dorothy McClung

# Pacific Rim Alliance

P.O. Box 420552  
San Diego, CA 92142



First Class Mail



**Winter 2004**



## PACIFIC RIM

### BOARD OF DIRECTORS

- PRESIDENT**... Catherine Ohl
- MEMBERSHIP**..... open
- TREASURER**.... Patricia Ortiz
- TRUSTEE**.... Bernie Stanton
- TRAVEL**..... Gene Fulkerson



E-Mail us at [info@pacificrimalliance.org](mailto:info@pacificrimalliance.org)

## Mission Statement

The PACIFIC RIM ALLIANCE is a non-profit organization dedicated to the appreciation of skiing, snowboarding, sight-seeing, photography, travel, public affairs and civic awareness. The Alliance is further oriented to the building of international relations among skiers, snowboarders and sports organizations throughout the Pacific Rim. The Alliance is a member of **San Diego Ski Club Council, Los Angeles Council, Far West Ski Association.**

Surplus moneys above requirements for deposits for future trips will be donated to non-profit organizations devoted to charity, research & education. We are especially interested in, but not limited to, supporting Ski Area Development, Adaptive Ski Programs, Jimmie Heuga Center for MS and Olympic & Junior Racers, Mammoth Ski Museum.

### For Information & Forms, Contact-

- Catherine Ohl ..... 858-467-9469  
ohl@acatmeowz.com [e-mail]
- Gene Fulkerson ..... 858-467-9469 [eve]/858-565-6721 [fax]  
gene@pacificrimalliance.org [email]
- Membership ..... 858-467-9469

### 2005 Trip Schedule-

- Snowmass, CO ..... January 29 - February 5, 2005
- Steamboat, CO ..... February 5-12, 2005
- Bormio & Malta, Italy ..... March 5-18, 2005
- Chile, South America ..... August 2005