



UPDATES

<http://PacificRimAlliance.org/>

Pacific Rim Snow Sports Alliance Updates

Vol. 5 • No. 22 • Summer 2001

INSIDE THIS ISSUE

The Alliance..... 1

Features

- Member Profile: Nancy Sanford 2
- Chef's Corner 5
- Snowboard Strip 9

Public Affairs

- US Ski Team 3

Safety & Health..... 5

- Health Insurance 6

Tripping Around 2

- Wine Maker Benefit 4
- Rat's Water Ski Program..... 6
- Big White, Canada 8
- Les Deux Alpes 7

Trip Wrap Up

- Water Skiing 5

Sign-Up Forms 9

- Membership 9
- Trips 9

- Ski With Pride •
- Watch All Sides •
- Let It Ride •

First With Safety Awareness

NATIONAL SKI AREAS ASSOCIATION



Associate Member
NATIONAL SKI AREAS ASSOCIATION



Membership in Pacific Rim Alliance gives you membership in LA Council of Ski Clubs (LAC), San Diego Ski Council (SDSC) and the Far West Ski Association (FWSA).



the Alliance

Big White—

We still have a few openings on the trip to Big White with LAC scheduled for February 2-9, 2002. Lodging will be ski-in/ski-out. Two hotel units will also be available right in the center of everything. Catherine & I have one of the units and is where the parties will be.

I've visited this area last year and found the snow quality to be the best I've ever skied – very little water content in the snow. If you've never skied snow this dry before, you are in for a treat.

For those of you looking for a second home, you might just find yourself thinking seriously about buying property in this area. This region is much like Whistler was 10 or 15 years ago.

Les Deux Alpes—

The pre-trip will start in Paris with visits to all the famous local sites. I was just reading a magazine the other day that stated that the number one thing to do in Paris these days is to roller blade. If anyone is interested, we may have to check this out. After Paris, we will then travel to Lyon and into the

mountains to Les Deux Alpes.

Les Deux Alpes is a large village with most all the shops and restaurants stretching from one end to the other. The elevation of the mountains reach an elevation of over 11,800 feet. A formidable ski area hardly visited by Americans, but well known in Europe as a premier ski resort.

Again this resort sits in one of the best wine areas of Europe — the region of Burgundy. I represent 3 of the top 5 products from this area. Looks like a stop to the winery might be in order. The wine of Domaine de le Romani Conti would be a real treat. Don't even bother to ask the price of these wines, they are outside most of our budgets.

After a week of skiing we will be heading to Costa del Sol, Spain for some fun in the sun. Much like the Amalfi Coast of Italy, this place offers a vast array of side trips — infamous Rock of Gibraltar, Morocco and Tangiers. The area is quite large with many things to see and do.

This should be another one of those memorable trips to add to our already long list of must visit places. I find it

Cont'd on page 4

**2001-02 MEMBERSHIP IS NOW DUE...
SEE PAGE 9 FOR APPLICATION**

TRIPPING AROUND

❖ Pacific Rim Alliance ❖

- COPPER MOUNTAIN, CO . . . 26 January - 2 February, 2002
Maureen Burrows @ 818-790-3576
- BIG WHITE, Canada 2-9 February 2002
Catherine Ohl @ 858-467-9469
- LES DEUX ALPES, France 1-9 March 2002
PARIS, France 27 February -2 March, 2002
COSTA DEL SOL, Spain 9-13 March, 2002
Gene Fulkerson @ 858-467-9469
- COSTA RICA Summer 2002
Gene Fulkerson @ 858-467-9469
- ITALY March 2003
Gene Fulkerson @ 858-467-9469
- NEW ZEALAND Summer 2003
Gene Fulkerson @ 858-467-9469

❖ Los Angeles Council ❖

- SNOW GALA, Marina del Rey 3 November 2001
Jacquie Nemor @ 310-399-0945
- BIG WHITE, Canada 2-9 February 2002
- ALYESKA, Alaska Feb 26-March 4, 2002
Ron Lucas @ 310-372-5236

❖ San Diego Council ❖

- ASPEN, CO, 13-18 December 2001
Mike Sanford @ 858-695-1442

❖ Far West Ski Association ❖

- COPPER MOUNTAIN, CO . . . 26 January - 2 February, 2002
Maureen Burrows @ 818-790-3576
- FWSA Convention, Portland, OR 6-9 June 2002

CONGRATULATIONS

Nancy Sanford

We are so very proud of **Nancy Sanford** who was honored with the **Elizabeth "Schatzi" Wood** award at the recent FWSA Convention. Nancy is one of those incredible behind-the-scene persons who sees a problem and resolves it before anyone else is even aware of it. Nancy has done a lot to advance the sport of skiing at the club, council, Far West and international levels, especially in the area of travel.

Nancy joined her first ski club, Fountain Valley Ski Club, in 1983. She joined Pacific Rim in 1997. Nancy was the first woman President of Fountain Valley Ski Club and under her leadership the club grew and recorded the most members and activities ever.

Nancy has been on the Orange Council Board for eight years. She has served as Trip Chairman, Newsletter Editor, and this year she was elected President.

For the past five years Nancy has been an invaluable member of the FWSA travel program staff. I could relate a zillion stories of how she bailed us out when transportation problems arose — from the time she commandeered buses in Mt. Bachelor to take us to Portland when the Bend airport closed to the time she drove, from Val Gardena to the Milan airport (and back), a participant who had to return home when he became ill.

Nancy and her husband John have been supporters of USARC (U.S. Adaptive Recreation Center) at Bear Mountain for many years. They have made donations to both the Peak-to-Peak ride and the San Diego Silent Auction and have driven their motor home as a support vehicle for the past 4 peak-to-peaks.

Due to the experience Nancy gained in running club and council travel programs, she was asked to join New Horizon Tours in 1991. She then worked for Central Holidays and is currently the VP of Ski Groups for Tour Pros, Ltd. Over the years she has helped clubs and councils from around the U.S. and FWSA & USRSA put together their travel programs.

Little did Nancy know when she answered that ad for Fountain Valley Ski Club all those years ago that she would find the fun, friends, laughter, excitement, craziness, and a whole new career. Skiing has truly changed her life and we are all better for having known, worked and skied with her. ■



Lynnell Calkins presenting the award to Nancy

FWSA CONVENTION

Congratulations, Pac Rim!

The FWSA convention was a blast. Pac Rim had four delegates with many members representing other clubs in Reno, NV this year.



*Gene, Cindy, Sandy, Larry (seated)
Ray, Kathleen, Vicki, Catherine*

Pacific Rim was again awarded the first place in the outstanding newsletter contest. In addition, Pacific Rim placed second in the first ever FWSA Web Contest. It was a happy moment for our editor and web master, **Catherine Ohl**. Catherine was also awarded a third place for her Century City Newsletter. ■

PUBLIC

AFFAIRS

by Catherine Ohl

U.S. Ski Team Head Coach Bill Egan Retires—

Longtime U.S. Ski Team Head Men's Alpine Coach **Bill Egan** will retire, according to an announcement by the U.S. Ski and Snowboard Association today. Egan, who has coached since 1989, has reportedly decided to leave the intense team travel schedule to spend more time with his family.

USSA Announces 2002 U.S. Squads—

The U.S. Ski and Snowboard Association announced the 2002 U.S. Alpine and Snowboard teams today. A total of 29 skiers and 24 snowboarders were named. Led by World Champion **Daron Rahlves** and first-time World Cup winner **Kirsten Clark**, the U.S. Ski Team has 13 other Olympians, including defending super G gold medalist **Picabo Street**. Other familiar names on the A Team include **Erik Schlopy**, **Chad Fleischer**, **Bode Miller**, **Megan Gerety**, **Caroline Lalive**, **Jonna Mendes**, **Sarah Schleper** and **Katie Monahan**.

Coaches are calling the team possibly the "deepest squad in history." Last season, an unprecedented 20 U.S. skiers scored points on the World Cup tour and U.S. skiers collected seven podium finishes. The U.S. Snowboard A Team includes three riders with Olympic experience: **Chris Klug**, **Rosey Fletcher** and **Sondra Van Ert**, the 1997 World Giant Slalom Champion.

Other team members include **Jeff Greenwood**, **Anton Pogue** and **Stacia Hookom** on the alpine team, and **Tricia Byrnes**, **Kelly Clark**, **Gretchen Bleiler**, **Tommy Czeschin**, **Ricky Bower** and former U.S. Open winner **Rob Kingwill** on the freestyle team. Two riders will remain on the Training Team and another 12 have been named to the development squad.

New Record for Skier Visits

A new record for skier visits, 57.3 million, was announced at the National Ski Areas Association convention for the 2000/01 season. The 57.3 million figure represents an increase of more than 11 percent from the previous year's 51.6 million and an increase of almost five percent (4.95 percent) over the previous record of 54.6 million set in the 1993-94 season. The strong

showing for this past season found many regions accounting for the increase, especially the Northeast. In fact, only the Pacific Northwest, which experienced very low snowfall in the early season, failed to participate in this season's strong attendance figures.

Squaw Valley Threatened With State Legal Action—

The battle between Squaw Valley USA and environmental officials flared again after California state regulators threatened action by the state attorney general's office if "egregious" acts against the environment by the Olympic resort did not cease. In a report published May 3, the Lahontan Water Quality Control Board cited a history of pollution to a tributary of the Truckee River and continued disregard to a sensitive mountain environment.

"It's a history of non-compliance," said Harold Singer, Lahontan's executive officer. It was nearly a year ago that federal agents of the EPA raided Squaw Valley Ski Corp offices to confiscate documents. Since that time Squaw Valley says it has worked closely with officials to address environmental concerns. Given the close and cooperative working relationship Squaw had established with Lahontan staff, they are very surprised by the Lahontan's report that they need to refer the matter to the office of the attorney general.

Mt. Bachelor—

Powdr Corp., which had been embroiled in a bid with former Mt. Bachelor CEO Randy Pape to take over Mt. Bachelor in recent months, announced it had secured 54 percent of the company's shares. Powdr's offer of \$20,100 per share plus lifetime skiing privileges at all Powdr resorts apparently swayed more than enough shareholders interested in selling despite the fact the offer was less than the Pape Group's tender offer of between \$22,100 and \$25,000 per share. ■

What the Future is Wearing!



You Are Invited to a Fund Raiser!

100% of proceeds to benefit Jimmie Heuga Center for Multiple Sclerosis

Wine Maker Dinner

Evening to include 5 Course Dinner prepared to match 5 special wines

Saturday, August 18, 2001, 5 PM

10818 Viacha Dr, San Diego, CA

ONLY
\$45

YES, please sign me up for the Wine Maker Dinner!

Sorry I won't be able to attend the Wine Maker Dinner. Here's my Tax Deductible contribution (any amount) for the Jimmie Heuga Center for MS.

For Information, call Gene or Catherine at 858-467-9469

Send Check (payable to Jimmie Heuga Center) to -
Gene Fulkerson at 10818 Viacha Dr., San Diego, CA 92124-3421

Name(s) _____

Home Phone: _____

Email: _____

Thanks for your support in the fight against MS!

Wine & Dinner donated by Catherine & Gene



DON'T FORGET TO RENEW YOUR MEMBERSHIP...

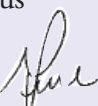
More on The Alliance from page 1

harder to really pick my favorite one. Years from now we can all sit around and reminisce. Don't be left behind, sign up today. **This trip is close to being full!**

Far West Convention—

The FWSA convention was in Reno, NV on 8-10 June 2001. We had a good time in spite of some ugly politics. Pac Rim placed first (again) in the newsletter contest and second in the Web Sites. Congratulations Catherine! – I know how much time you put into both. AND finally, I'd like to congratulate **Nancy Sanford** on being honored with the **Elizabeth "Schatzi" Wood** award.

Water Skiing—

Hope some of you will be able to join us and the Rats for some great water skiing. It should be a fabulous summer. ■ 

LATE BREAKING NEWS!

Les Deux Alpes Finalized—

We will be flying Swiss Air to Zurich and onto Geneva. We will bus to Les Deux Alpes from Geneva (about an extra hour). In Paris, we will be staying in a three-star hotel less than a block off the Champs Elysées. Price is \$399. In Costa del Sol we will be staying in the 4-star Melia Costa Del Sol, adjacent to the El Bajondillo Beach on the Mediterranean Sea. We will depart Spain on the fourth day at 5 PM and overnight in Zurich before returning home.

Big White Finalized—

We finally got our air price. We will be flying Alaska Air into Seattle and then Horizon to Kelowna. The price for the Black Bear Luxury 3 Bedroom/2.5 Bath condos is \$979 per person. The two-room suites at Chateau Big White are \$999 pp.

Confirmations will be sent for both trips by August 1. ■

WATER SKI

TSR on May 12 with the Rats—

The first trip to Thompsons was a lot of fun with great weather. It was pretty warm even though the sun never actually came out. Your truly only took 3 runs since I



Sheree Tanouye

knew I was going to be very sore. I saw **Dennis McMullin** the following day and he could hardly move. Of course, he took all five runs.

Dave Makowski, Tina Propps and **Gene Fulkerson** did the honors of dragging us around the lake. It was a long day for most of us since it was only our first day out.

Leif Widmeyer was the first to wimp out and left just after **Pam Malouf** arrived at the crack of 2 pm. She still managed to get four runs in. **Sheree Tanouye** was back after a few year's absence. Over half of us also belong to Pac Rim, including **Larry Davis, Julian Watkins,** & first TSR timers **Suzanne Gilbert & Tom White.**

After the adults whimped, the kids, **Alec & Kristin Makowski** showed us all up by skiing after swimming all day. Youth!

There are three more Thompson trips and 10 more River Trips. See flyer on page 6. ■



Alec & Kristin Makowski

Chef's CORNER

by Gene Fulkerson

Tequila and Lime Pork Spareribs—

Ingredients—

- 1 rack of pork spareribs (about 3 lbs.)
- Salt
- Freshly ground black pepper
- 1 cup olive oil
- 4 limes, juiced
- 1/2 cup (or more) tequila
- 1/4 cup finely chopped onions
- 2 tbs minced garlic
- 2 med jalapenos, stemmed, seeded, finely chopped
- 2 tbs finely chopped fresh cilantro

Serves 4 to 6.

Prepare at least 12 hours in advance—

Season the ribs with salt and pepper. In a small mixing bowl, whisk the oil, lime juice, tequila, onions, garlic, jalapenos and cilantro. Whisk well. Season with salt and pepper. Place the ribs, meat side down, in a glass baking dish. Pour the marinade over the ribs, coating each side completely. Cover with plastic wrap and refrigerate overnight, turning every couple of hours.

Grilling—

Remove from the refrigerator and bring the ribs to room temperature. Preheat the grill on low heat. Place the ribs, meat side down, and slowly grill the ribs, turning and basting every 15 minutes. Cook for about 1 1/2 to 2 hours, or until the ribs are tender. Remove from the grill and slice into individual ribs. ■



Health INSURANCE

by Catherine Ohl

New regulations seen as giving insurance companies the green light to deny coverage for injuries sustained when skiing, horseback riding, motorcycling, and partaking in other similar activities went into effect May 10, 2001 despite a flurry of mail from recreation groups objecting to the rules. The regulations were written for the Health Insurance Portability and Accountability Act of 1996, which, in part, prohibits insurers from denying coverage to individuals based on their recreational pursuits, but now apparently allows for case-by-case exclusions of benefits.

That means recreational water & snow skiers who get health insurance through a group plan at work could find themselves holding the bag when it comes to hospital and doctor bills that result from an injury sustained while skiing.

A spokesperson for the Health Care Financing Administration, which helped write the regulations, said that “a miniscule number” of insurance companies across the country actually have such exclusionary clauses in their policies and that it was inconceivable consumers would accept such policies from an employer. Of course, they failed to mention, that employees are not really given much of a choice.

We feel that the rules are, in fact, discriminatory, contradictory and

send the laughable message to customers – and voters – to “stay on the couch.” The NSAA was joined by a national snowmobile owner’s group, the American Motorcyclist Association and the American Horse Council (AHC) in protesting the regulations. There are far-reaching implications to this bill and one can only wonder where the line will be drawn in defining activities that are similar to skiing and horseback riding.

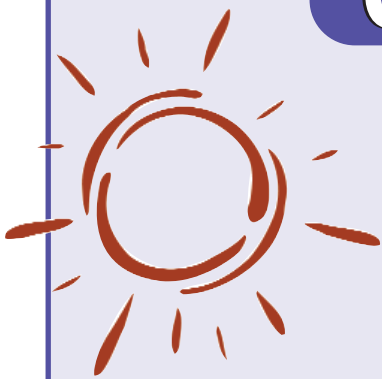
A word to the wise, check your insurance policy. ■



Pac Rim & Radar River Rats PRESENTS

2001 WATER SKIING

COLORADO RIVER TRIPS



2 Days Water Skiing
Sandy Beaches • Camping • Ski Equipment
Food • Beer • Wine • Soda

July 13-15 • July 27-29
August 10-12 • August 24-26
September 7-9 • September 21-23
October 5-7 • October 19-21



\$89 skiers / \$42 non-skiers / \$18 children (5-11)

To SIGN UP — CONTACT PATRICIA @ 323-651-0686

Pacific Rim Alliance announces



1 - 9 March 2002

Basic Package to Include—

- NON-STOP Air from LAX to Zurich to Geneva, via Swiss Air - Complimentary In-Flight Drinks, Meals, Movies
- Luxury Coach Transfer from Geneva to Les 2 Alpes
- Seven Nights Luxury Lodging, Private Bath, Double Occupancy
- Seven Breakfasts and Dinners
- The Usual Parties, Souvenirs and much MORE!

Price Does Not Include—

- US and Foreign Departure Fees, Fees and PFCs (est \$76)
- Lift Tickets (from \$24 per day)

Options Available at Additional Cost—

- 3-day Pre Trip to Paris France **\$399**
- 4-day Post Trip to Costa del Sol, Spain **\$599**
- Excursions from Les 2 Alpes
- Return Extensions for Up to 30 Days

For Reservations & Information—

- Deposit Due Now: \$400 (Check Payable to "Pacific Rim") to—
Gene Fulkerson @ 10818 Viacha Dr., San Diego, CA 92124
- For More Information, contact—
Gene Fulkerson at 858-467-9469 (eves)
Catherine Ohl at ohl@acatmeowz.com

Fully refundable until May 1, 2002 when prices will be finalized

Must be a Member of Pacific Rim

**Price
\$1,459**



SKIING 2002

Les Deux Alpes

Les 2 Alpes is France's second oldest ski resort (after Chamonix). It is a world class resort with one of the largest ski areas and vertical drops to be found anywhere. Add to this a huge range of après-ski options and the lift-linked descent to La Grave, and you have a very special destination.

La Bérangère—

In Les Deux Alpes, we will all be staying at the 4-star, ski-in, ski-out La Bérangère Hotel. The rooms have a south or south-west exposure with

lift service, private bathroom, separate toilets, telephone and satellite TV. For your comfort there is a lounge, bar, fireplace, piano, inside swimming pool, sauna, Jacuzzi, gym and game room.

Costa del Sol—

As a post trip, we will be going to Costa del Sol in Spain. A popular vacation spot for Europeans, the beaches here go on for miles and the shops that line them abound with bargains in clothing and imports from around the world.

Africa is only nine miles away across the Straits of Gibraltar and Algiers. In a few short hours, we can tour the city by private bus, ride camels, shop for oriental rugs, discover a world of eastern spices and enjoy a Moorish lunch on the Mediterranean. ■

LES DEUX STATISTICS

Top Elevation:	11,810 ft
Village Elevation:	5,414 ft
Vertical drop:	7,546 ft
Marked Pistes:	122 miles— Beginner 30% Intermediate 35% Advance 25%, Expert 10%
Longest Piste:	8 miles
64 Ski-lifts:	1 funicular, 3 aerial trams, 2 cable cars, 4 gondolas, a 8-pk detachable (for 2002), 24 chairs, 29 drags
Snowboard facilities:	Half Pipe, Boardercross and Jump Modules
Cross country Trails:	13 miles
Free Shuttle Service:	8:30 AM to 8:30 PM
Other Winter Activities:	If you can tear yourself away from skiing, the ice grotto should not be missed. It is a tunnel almost 400 feet long with fantastic ice statues carved out of the glacier.

Pacific Rim presents

2002 LAC Ski Week in Big White, Canada

February 2 - 9, 2002



Package to Include—

- Round Trip Air (price still to be determined)
- Round Trip Ground Transfer from Kelowna
- 7 Nights Lodging (Double Occupancy), Ski-In / Ski Out **Black Bear** Condos
- 5 Day Lift Ticket
- Welcome Party
- Après Ski Parties
- On-Mountain Picnic
- 2 Nastar-type Races
- Farewell Banquet
- Souvenir & other goodies & so much more

from

\$979

Taking Reservations & Deposits NOW—

To hold your reservations send \$100 deposit (refundable until price is finalized) to Pacific Rim—

c/o Gene Fulkerson, 10818 Viacha Dr., San Diego, CA 92123, 858-467-9469, gene@pacificrimalliance.org

Tour Pros Ltd.

Top Reasons to Visit Big White

It's the SNOW – an average of 24.5 feet of light champagne powder, locally known as Hero's snow.

Best variety of terrain. One of the features is a green run from the top of every lift.

A true Alpine Village with ski-in / ski-out access to the slopes.

A modern lift system with an 8-pack gondola, four high-speed quads, one regular quad, one t-bar, a triple and a double.

State-of-the-art grooming and pipe machines.

Affordability – you can expect the best for less.

Snowboarder's heaven with terrain & freestyle parks and half pipe.

Pac Rim is going there 2-9 February, 2002! ■

Black Bear Condo

Pac Rim will be staying at the fabulous Black Bear Condos in the heart of the Big White village with ski-in / ski-out access.



The Black Bear Condos features natural pine post and beam construction with private outdoor hot tubs for each condo. Condos are three bedrooms with 2.5 baths, gas fireplace, and full kitchen.

We also have two two-room suites at the Chateau Big White for two for an additional \$20. They have fireplace, loft and kitchen. ■

SNOWBOARD STRIP

One may think that most pro snowboarders have now either resorted to skating or surfing for fun, but many have flocked to Mammoth to take advantage of killer springtime conditions and an unbelievable halfpipe.

The U.S. Snowboard Team is holding a training camp at Mammoth, which still has great snow coverage and is open to the public. Despite it being late May, the mid-mountain pipe is in pristine condition. It is a bit short, with most riders getting just three hits, but the walls are perfect and all of the riders are having a blast.



Both **Ricky Bower** (Park City, UT) and **Rob Kingwill** (Jackson, WY) were working on their backside tricks, getting tips from coaches **Pete Delgiudice** and **John Heath**.

The riders will get a break before going to Park City, Utah for trampoline and water ramp work at the Utah Olympic Park. ■

Membership Application 2001 - 02

ALL Pacific Rim Alliance attendees must be a member to participate in one of our trips. Our membership year is from 1 July 2001 through 29 September 2002.

To join the Pacific Rim Alliance, fill out the following and send with your check (payable to Pacific Rim Alliance) to:

MAUREEN BURROWS
5266 LA CAÑADA BLVD, LA CAÑADA, CA 91011

NAME(S): _____

HOME ADDR: _____

CITY: _____ STATE: _____ ZIP: _____

E-MAIL ADDR: _____

HOME PHONE: _____

WORK PHONE: _____

FAX LINE: _____

DATE OF BIRTH: _____

Indicate Membership (Includes membership in FWSA)

- \$8 INDIVIDUAL Membership
 \$10 FAMILY Membership—Significant other, spouse, children, friends residing at same residence qualify

WAIVER: I am aware that participation in the Pacific Rim Alliance events has, in addition to the usual risks, dangers and hazards associated with travel, snowboarding, alpine, Nordic, Heli & off-piste skiing, certain additional risks, dangers and hazards including, but not limited to: boarding, riding and disembarking ski lifts; changing weather conditions; exposed or hidden natural or man-made objects; avalanches; failure to ski or ride safely or within one's own ability; and negligence on the part of other skiers and boarders, the organization or their staff. I freely accept and fully assume all such risks and danger and the possibility of personal injury, death, property damage or loss, resulting therefrom.

Signature Date

Signature Date

Pacific Rim Trip Sign-Up Form

(You must be a current member to sign up for this trip— include Dues and Membership Application if not a member)

PRINTED NAME(S) _____

STREET ADDRESS _____

CITY _____

STATE _____

ZIP _____

HOME PHONE _____

FAX _____

E-MAIL _____

DEPOSIT DUE: \$400/ person for Les 2 Alpes, France OR \$100/ person for Big White, Canada

- Les Deux Alpes
 Big White
 Other

—SEND THIS FORM WITH YOUR DEPOSIT MADE OUT TO PACIFIC RIM ALLIANCE TO:

Gene Fulkerson, 10818 Viacha Dr., San Diego, CA 92124

Pacific Rim Alliance

P.O. Box 420552
San Diego, CA 92142



First Class Mail



Summer – 2001

PACIFIC RIM

BOARD OF DIRECTORS

PRESIDENT .. Catherine Ohl

MEMBERSHIP .. Mo Burrows

TREASURER ... Patricia Ortiz

TRUSTEE.... Bernie Stanton

TRAVEL Gene Fulkerson



E-Mail us at info@pacifictimalliance.org

Mission Statement

The PACIFIC RIM ALLIANCE is a non-profit organization dedicated to the appreciation of skiing, snowboarding, sight-seeing, photography, travel, public affairs and civic awareness. The Alliance is further oriented to the building of international relations among skiers, snowboarders and sports organizations throughout the Pacific Rim. The Alliance is a member of San Diego Council, Los Angeles Council, Far West Ski Association.

Surplus moneys above requirements for deposits for future trips will be donated to non-profit organizations devoted to charity, research & education. We are especially interested in, but not limited to, supporting Ski Area Development, Adaptive Ski Programs, Jimmie Heuga Center and Olympic & Junior Racers.

FOR INFORMATION & FORMS, CONTACT—

- Catherine Ohl 310-538-5435 (voice e-mail)
ohl@acatmeowz.com (e-mail)
- Gene Fulkerson 858-467-9469 (eve)
858-565-6721 (fax)
gene@pacifictimalliance.org (email)
- Maureen Burrows..... 818-790-3576 (eve)
818-790-3411 (fax)
LuvMO@aol.com (e-mail)