



UPDATES

<http://PacificRimAlliance.org/>

Pacific Rim Snow Sports Alliance Updates Vol. 5 • No. 21 • Spring 2001

INSIDE THIS ISSUE

The Alliance..... 1

Features

- In Loving Memory of John Jay..... 2
- More Zermatt Photos..... 4
- Chef's Corner..... 5
- Snowboard Strip..... 9

Public Affairs

- Powder Vies to Buy Ski Resorts..... 3
- Mammoth Season Pass..... 3
- New Hidden Credit Card Fees..... 6

Tripping Around..... 2

- FWSA Convention..... 2
- Rat's Water Ski Program..... 6
- San Diego Aloha to Winter..... 8
- Big White, Canada..... 8
- Les Deux Alpes..... 7

Safety & Health..... 5

Sign-Up Forms..... 9

- Membership..... 9
- Trips..... 9

- **Ski With Pride**
- **Watch All Sides**
- **Let It Ride**

First With Safety Awareness



Associate Member
NATIONAL SKI AREAS ASSOCIATION



Membership in Pacific Rim Alliance gives you membership in LA Council of Ski Clubs (LAC), San Diego Ski Council (SDSC) and the Far West Ski Association (FWSA).



the

Alliance

Les Deux Alpes—

Here we go again with our European trip for 2002. The pricing, as always, is very aggressive. The pre-trip will put us in Paris for a fabulous three days. We are also looking at the possibility of taking the TGV to Lyon and bus up to Les Deux Alpes. This is a large magnificent area rarely skied by Americans. It's a great village with plenty of shopping, night life and miles of skiing.

We have **reserved only 50 spots** in a beautiful 4-star hotel that is ski-in, ski-out. Once we fill up this hotel we may be able to get some rooms at the 3-star that is near by.

After skiing we will be going to Costa del Sol in Spain. The area has the feel of the Amalfi coast but with the Rock of Gibraltar, Morocco and more.

We have already sold 20 of our spots so if you want to go, you will need to get your deposit in asap. We did block air for 80 people so we do still have the option of growing.

Big White—

We are planning on joining up with LA Council on their trip to Big White in Canada. We are **limited to only 30 people** and already sold 20 of the spots. Since money talks, if you would

like to go on this trip, you will need to send a \$100 deposit to me asap.

We will be staying at the Black Bear — beautiful, new, ski-in, ski-out, 3 bedroom, 2.5 bath condos, each with their own outdoor hot tub. We will be getting the bedding arrangements in July. We are still trying to get the two-room suites at Big White Chateau. The price for the condos is still estimated to be \$949 and the suites to be \$991.

We will keep you posted but will not be able to confirm anything until July.

Far West Convention—

The Far West Ski Association convention will be in Reno, NV on 8-11 June 2001. There will be the usual (casino) bar crawl, golf, tennis, Silent Auction, dinner, dancing, meetings and election. In addition, the featured guest will be **Debbie Armstrong**, an '84 Sarajevo Gold Medalist. Rumor has it that **Billy Kidd** and **A.J. Kitt** will also be making an appearance. **Catherine Ohl** & I will be in attendance. Let me know if anyone else is interested in attending.

Web Site—

Catherine has been busy expanding the Pacific Rim Web Site. If you haven't visited it in a while, you should surf by and check out the History of Skiing section under Public Affairs and the Photo Gallery. ■

TRIPPING AROUND

❖ Pacific Rim Alliance ❖

- CHILE TBA
Gene Fulkerson @ 858-467-9469
- BIG WHITE, Canada 2-9 February 2002
Catherine Ohl @ 858-467-9469
- LES DEUX ALPES, France 1-9 March 2002
PARIS, France 27 February -2 March, 2002
COSTA DEL SOL, Spain 9-13 March, 2002
Gene Fulkerson @ 858-467-9469
- ITALY 2003
Gene Fulkerson @ 858-467-9469
- NEW ZEALAND Summer 2003
Gene Fulkerson @ 858-467-9469

❖ Los Angeles Council ❖

- SNOW GALA, Marina del Rey 3 November 2001
Jacque Nemor @ 310-399-0945
- BIG WHITE, Canada 2-9 February 2002

❖ San Diego Council ❖

- ALOHA TO WINTER, 12 May 2001
Susan Ely @ 858-271-7344
- ASPEN, CO, 13-18 December 2001
Mike Sanford @ 858-695-1442

❖ Far West Ski Association ❖

- FWSA Convention 2001, Reno, NV 8-10 June 2001
- COPPER MOUNTAIN, CO . . 26 January - 2 February, 2002

FWSA CONVENTION

8-11 June 2001
PEPPERMILL, RENO, NV

This year's convention is in Reno, NV. There will be the usual (casino) bar crawl, golf, tennis, Silent Auction, dinner, dancing, meetings and election. In addition, the featured guest will be **Debbie Armstrong**, a 1984 Sarajevo Gold Medalist.

Rooms at the Peppermill are \$79 a night until April 30, 2001. Call 1-800-282-2444 and mention Group Code RFWSA01.

Southwest Airlines is offering FWSA Convention attendees a 10% discount. Call 1-800-433-5368 and use Code A8112.

Registration for meetings, meals, and dinner/dance is \$109 before April 30, 2001. If you are interested in representing Pac Rim as a delegate, contact Catherine at 858-467-9469. ■

IN MEMORY

John Jay

Born in New York, John learned to ski as a youth and played ice hockey at Williams College. He graduated in 1938 and wrote scripts for "The March of Time," a series of movie theater news reels. He also produced two films, "Ski the Americas, North and South" and "Ski Here, Senior," the latter a tour of North American resorts by the Chilean national ski team. During WWII, John shot recruiting and training films of mountain troops, including the 10th Mountain Division.



John with Gene at Telluride in '99

One of the first film makers to capture the grace and exhilaration of downhill skiing, John began his career in 1939. He was the official photographer of the 1948 Winter Olympics. One of John's films, "Alpine Safari," was nominated for an Academy Award in 1952 in the best short subject category. Warner Brothers bought it and released it after changing the title to "Winter Paradise." John was credited by contemporary film makers **Warren Miller** and **Greg Stump** as an influence in their work.



John with Niki Stone & wife MM at '98 FWSA Convention

The International Ski History Association gave John a lifetime achievement award in 1997 and designated him "Skier of the 20th Century." In 1998, FWSA awarded John the Bill Berry Award for Modern Media.

John was a very rugged guy— he skied and played tennis in his 80s. He last skied with Pac Rim in Telluride in 1999. At 84, John was still showing and narrating his films with characteristic humor and enthusiasm. John was four days shy of his 85th birthday when he died from cancer December 7, 2000. To find out more about John or his films visit –

www.johnjayskifilms.com ■

PUBLIC

AFFAIRS

by Catherine Ohl

Powdr Corp., parent company of Park City, Utah as well as Alpine Meadows, Boreal and Soda Springs in California, is in a struggle to acquire two new ski areas—Winter Park, CO and Mt. Bachelor, OR. Here's the latest news in the two unfolding dramas.

Denver Says Winter Park Not for Sale —

Powdr Corp. announced its interest in partnering with the city of Denver in running Winter Park. After an off season in 1999-2000, Winter park exercised its option to skip a rent payment to the city valued at \$2.3 million, which led to Denver's reevaluation of the ski area. The city put together a panel to decide the fate of the resort, which needs extensive capital investment of more than \$63 million to bring it up to snuff so as to be competitive with other Colorado ski resorts.

Denver Mayor said the city would not sell Winter Park Resort, but would begin hunting for a partner to help run it and infuse it with the cash necessary to keep it competitive. The announcement came a day after the 25-person Winter Park Advisory Committee picked by the mayor recommended the city either sell the resort or form a joint partnership to manage it.

Mt. Bachelor Recommends Pape Group Offer —

Mt. Bachelor's Board of Directors decided to recommend that shareholders accept the Pape Group's offer to purchase the ski area because it would bring them more money. But the choice of selling to former CEO **Randy Pape** or **Powdr Corp.**, which reported last month it had secured commitments on about 70 percent of Mount Bachelor shares, is still up to the shareholders.

If **Powdr Corp.** purchases enough shares or obtains enough signed tender offers to win voting control, it will ask Mount Bachelor's board of directors to approve a merger agreement. That would probably result in a **Powdr Corp.** move to add significant snowmaking as

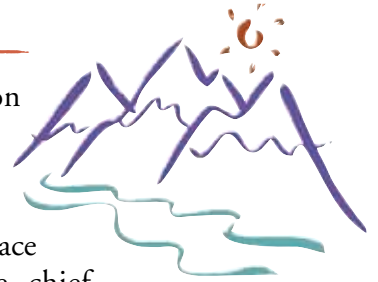
one of the first improvements it makes to Bachelor.

If the **Pape Group** gains the majority, it's likely that **Intrawest** would be brought in to manage the resort. Pape has said his concern is to keep ownership of Mt. Bachelor local. **Intrawest** has twice offered to purchase Bachelor in the last few years but was turned down by its board. **Intrawest's** first move would probably be to build a village at the mountain's base.

New Forest Chief Named —

The Bush administration has announced that **Dale Bosworth**, a career U.S. Forest Service officer, has been picked to take the place of former forest service chief

Mike Dombeck. **Dombeck**, who came to the service from the Bureau of Land Management, resigned because of differences with the Bush administration.



Initial reaction to **Bosworth's** appointment was one of gratification that the choice was an insider. Interestingly, **Bosworth**, like his predecessor, has been a defender of Bill Clinton's Roadless Initiative. For his part, **Dombeck** recommended the Bush administration not negotiate a settlement of the road-building ban as he left his office.

Last summer, **Bosworth** was quoted as saying that both detractors and those who claim the initiative does not do enough to protect roadless areas have been guilty of distortion. In fact, he noted, the initiative provides plenty of recreational use while adding another layer of protection to the land in question. ■



Mammoth Mountain is offering another amazing season of skiing and boarding for **only \$399**. Take advantage of this incredible deal and sign up for your Mammoth Value Pass beginning April 1, 2001. Offer available until May 31, 2001 Your pass is valid beginning May 1, 2001.

ONLY \$399

You can purchase the Value Pass online at <http://mammothmountain.com> or by phone at 800-MAMMOTH. Do it today! ■

ZERMATT

Photos

They say that one photo can speak a thousand words. I think these photos say it all — Zermatt was spectacular. Check out the photo gallery at www.pacificrimalliance.org to see these and more photos in color and full size. ■



Franco Antonicelli, Bob Miller, Brigitte Cox, Robert Miller



Gene Fulkerson, Bill Pritchard, Jeanette Day, Brigitte Cox



Kathy Bell, Gary Bunney, Britt-Marie Karlsson



Barbara & Stu Bailly, Tom & Carolyn Delahanty, Cheyenne Hlady



Trini Solano-Galvez, Diane Lee, Esther Livshitz, Jane Snow



Dave Steffes, Richard Pounds, Alan Feagin



Larry Stern, David Steffes, John Good, Robert Miller

Star Vega

Star Vega was diagnosed in late January with a rare form of Leukemia that strikes quickly and without warning. Her time in the hospital and recovery has been made easier because of friends who have sent her endless amounts of cheer, hope, well wishes and prayers.

For those of you who would like to do something to help Star, she and her family have asked for any old **Video Movies** or **Books on Tape** that you do not require to be returned. She would love some comedy or action flicks.

Cards, notes, and well wishes are always appreciated.

Star Vega, kwikmind@aol.com
2519 Cross St., La Crescenta, CA 91214 ■

Yellow JACKETS

Skier safety is one of the hottest topics in the ski industry today, and there's no place where safety is more of a burning issue than at Vail and Beaver Creek Resorts.

This season Vail Resorts introduced the **Yellow Jackets**, a team of safety enforcers who monitor slow skiing and family zones, and preach the gospel of "Your Responsibility Code." Although there is no solid data on



Yellow Jackets reducing skier collisions, reckless or out-of-control skiing, the program has been reported a huge success.

If nothing else it's high-lighted skier safety. While the Yellow Jackets have

taken the sting out of fast and reckless skiing, their goal is not to pull passes and kick people off the mountain - although that has happened.

The jackets are just trying to get people to think about a safe place to stop; yielding the right away to the downhill skier; looking uphill before merging onto a trail; all of those things make for a safer mountain. ■

Chef's CORNER

by Gene Fulkerson

Your Guide to the "Oui" Hours—

In France, wine is enjoyed as an integral part of daily life. It is both an everyday necessity and the poetic expression of an art that has been honed, crafted and lovingly labored over for more than two millennia.

Champagne isn't a style of wine, it's actually a region in Northeast France where this famous sparkling wine comes from. Nothing says "Celebrate!" quite the way Champagnes do. Festive and versatile, they can be savored with an enormous range of foods.

Every champagne is a blend of wine, made from Chardonnay, Pinot Noir and Pinot Meunier grapes. However, every producer has its own special blend, which is its distinctive signature.



- **Non-vintage Champagne** is created by an individual house and maintains a consistent style from year to year. It is aged three years before being sold, so it is ready to drink when you buy it.
- **Vintage Champagne** lists the year a wine is made. It is declared only in years when the harvest is considered extraordinary.
- **Prestige Cuvée** is generally a vintage Champagne, produced only from the best of a particular year's harvest.

Salon Champagne is the original Blanc de Blancs, created at the turn of the century by Eugene-Alme Salon. Produced in only the best years (32 out of the past 78), a maximum of 12,000 cases are made. Each vintage is aged 8-10 years prior to release. *Le Mesnil 1988* approximate price is \$120

Champagne Taittinger, established in 1931 by Pierre Taittinger on the foundations of Forest-Foreaux, is the third oldest wine producing house of Champagne. *Brut Millesime 1995* approximate price is \$60.

To find out more about Champagne visit

www.champagnes.com. ■

Credit CARDS

by Gene Fulkerson

Have you ever wondered why you are continually solicited to sign up for new credit cards with such gimmicks as low balance transfers with no interest or low APR's for six months, etc. There are a million gimmicks and new credit cards to match with high limits all for just signing your name.

Ever wonder why? Well, let me enlighten you on the latest way the credit card companies are taking your money.

My interest all started a few months ago when I received in the mail new rules and regulations for one of my cards. I usually (like most everyone) just toss them in the trash.



What caught my eye was some bold printing which said "If you disagree with these new rules, call us and we will cancel your card." Seemed a bit blunt considering they are in the business of getting people to use their cards.

After reading the extra small print, I realized that new fees for overseas purchases are being added to our cards unbeknownst to us. These charges are not actually disclosed on your statement. I confirmed this by speaking to the VP at two major credit card companies.

Some US and Canadian credit card companies are tacking an extra 2 - 5% fee on international transactions. This is not a currency exchange commission because that is already being taken out (1 - 2%).

Not all cards charge the same fees, it's up to the bank who handles the card. With the loss

of income because travelers are no longer using traveler's checks, card companies are looking for new ways to make upwards to 10% on your card — in addition to charges for interest, cash advances (2%+), late fees (\$25+), payments by phone (\$10-\$25+), etc.

Some tips on how to avoid surcharges —

- Check with your Visa or MasterCard about fees added for foreign-currency transactions before each trip.
- Shop around for the card that charges no or low fees for currency conversion.
- Use American Express when necessary.

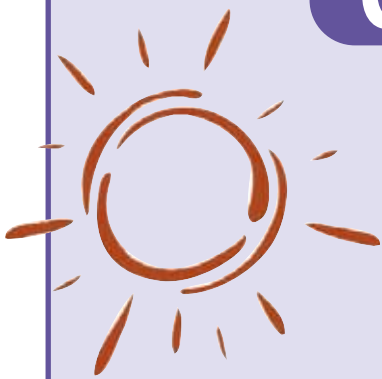
In addition to surcharges on credit card transactions, some banks are now charging hidden fees of several percentage points on foreign currency ATM transactions. So if you think your ATM card is the best way to get cash, check with your bank before you travel overseas. ■



Pac Rim & Radar River Rats PRESENTS

2001 WATER SKIING

COLORADO RIVER TRIPS



2 Days Water Skiing
Sandy Beaches • Camping • Ski Equipment
Food • Beer • Wine • Soda

June 8-10 • June 22-24
July 13-15 • July 27-29
August 10-12 • August 24-26
September 7-9 • September 21-23
October 5-7 • October 19-21



\$89 skiers / \$42 non-skiers / \$18 children (5-11)

To SIGN UP — CONTACT PATRICIA @ 323-651-0686

Pacific Rim Alliance announces



1 - 9 March 2002

Basic Package to Include—

- NON-STOP Air from LAX to Frankfurt to Lyon, via Lufthansa - Complimentary In-Flight Drinks, Meals, Movies
- Luxury Coach Transfer from Lyon to Les 2 Alpes
- Seven Nights Luxury Lodging, Private Bath, Double Occupancy
- Seven Breakfasts and Dinners
- The Usual Parties, Souvenirs and much MORE!

**Price
\$1,459**

Price Does Not Include—

- US and Foreign Departure Fees, Fees and PFCs (est \$76)
- Lift Tickets (from \$24 per day)

Options Available at Additional Cost—

- Pre Extensions to Paris France
- Post Extensions to Costa del Sol, Spain
- Excursions from Les 2 Alpes
- Return Extensions for Up to 30 Days

For Reservations & Information—

- Deposit Due Now: \$400 (Check Payable to "Pacific Rim") to—
Gene Fulkerson @ 10818 Viacha Dr., San Diego, CA 92124
- For More Information, contact—
Gene Fulkerson at 858-467-9469 (eves)
Catherine Ohl at ohl@acatmeowz.com

Fully refundable until May 1, 2002 when prices will be finalized

Must be a Member of Pacific Rim

Central Holidays



SKIING 2002

Les Deux Alpes

Les 2 Alpes is France's second oldest ski resort (after Chamonix). It is a world class resort with one of the largest ski areas and vertical drops to be found anywhere. Add to this a huge range of après-ski options and the lift-linked descent to La Grave, and you have a very special destination.

La Bérangère—

In Les Deux Alpes, we will all be staying at the 4-star, ski-in, ski-out La Bérangère Hotel. The rooms have a south or south-west exposure with

lift service, private bathroom, separate toilets, telephone and satellite TV. For your comfort there is a lounge, bar, fireplace, piano, inside swimming pool, sauna, Jacuzzi, gym and game room.

Costa del Sol—

As a post trip, we will be going to Costa del Sol in Spain. A popular vacation spot for Europeans, the beaches here go on for miles and the shops that line them abound with bargains in clothing and imports from around the world.

Africa is only nine miles away across the Straits of Gibraltar and Algiers. In a few short hours, we can tour the city by private bus, ride camels, shop for oriental rugs, discover a world of eastern spices and enjoy a Moorish lunch on the Mediterranean. ■

LES DEUX STATISTICS

Top Elevation:	11,810 ft
Village Elevation:	5,414 ft
Vertical drop:	7,546 ft
Marked Pistes:	122 miles— Beginner 30% Intermediate 35% Advance 25%, Expert 10%
Longest Piste:	8 miles
64 Ski-lifts:	1 funicular, 3 aerial trams, 2 cable cars, 4 gondolas, a 8-pk detachable (for 2002), 24 chairs, 29 drags
Snowboard facilities:	Half Pipe, Boardercross and Jump Modules
Cross country Trails:	13 miles
Free Shuttle Service:	8:30 AM to 8:30 PM
Other Winter Activities:	If you can tear yourself away from skiing, the ice grotto should not be missed. It is a tunnel almost 400 feet long with fantastic ice statues carved out of the glacier.

Pacific Rim presents

2002 LAC Ski Week in Big White, Canada

February 2 - 9, 2002



Package to Include—

- Round Trip Air (price still to be determined)
- Round Trip Ground Transfer from Kelowna
- 7 Nights Lodging (Double Occupancy), Ski-In / Ski Out **Black Bear** Condos
- 5 Day Lift Ticket
- Welcome Party
- Apres Ski Parties
- On-Mountain Picnic
- 2 Nastar-type Races
- Farewell Banquet
- Discounts on Activities
- Souvenir & other goodies & so much more

estimated from
\$949

Taking Reservations & Deposits NOW—

To hold your reservations send \$100 deposit (refundable until price is finalized) to—

Gene Fulkerson, 10818 Viacha Dr., San Diego, CA 92123, 858-467-9469, gene@pacificrimalliance.org

Tour Pros Ltd.

San Diego Council presents

Aloha to Winter

Saturday, May 12, 2001, 6-11 pm

Silver Gate Yacht Club on Shelter Island

Includes—

- Light Buffet
- Discounted Drinks
- Dancing by DJ
- Luau Attire Optional

\$25*
* Advance
Reservations

Tickets NOW available—

Susan Ely, 10987 Westmore Circle, San Diego, CA 92126, 858-271-7344



SNOWBOARD STRIP

Following Aspen Ski Company's decision to allow snowboarding on Ajax Mountain only four ski areas remain with boarderless slopes. So which resort will be next?

Deer Valley—

Deer Valley are not saying never, but their decision is based upon guest surveys at Deer Valley and Park City.

Taos—

Taos feels that the layout of their mountain is not conducive to mixing skiers and snowboarders. Taos is a small family resort with a loyal skier following, and many want to keep it that way.

Alta—

Alta reevaluate their decision on a year-to-year basis.



Mad River Glen—

As for Mad River Glen, the Coop-owned resort is sticking to their motto—SKI it if you can. ■

Membership Application 2000-01

ALL Pacific Rim Alliance attendees must be a member to participate in one of our trips. Our membership year is from 1 July 1999 through 29 September 2000.

To join the Pacific Rim Alliance, fill out the following and send with your check (payable to Pacific Rim Alliance) to:

MAUREEN BURROWS
5266 LA CAÑADA BLVD, LA CAÑADA, CA 91011

NAME(S): _____

HOME ADDR: _____

CITY: _____ STATE: _____ ZIP: _____

E-MAIL ADDR: _____

HOME PHONE: _____

WORK PHONE: _____

FAX LINE: _____

DATE OF BIRTH: _____

Indicate Membership (Includes membership in FWSA)

- \$8 INDIVIDUAL Membership
 \$10 FAMILY Membership—Significant other, spouse, children, friends residing at same residence qualify

WAIVER: I am aware that participation in the Pacific Rim Alliance events has, in addition to the usual risks, dangers and hazards associated with travel, snowboarding, alpine, Nordic, Heli & off-piste skiing, certain additional risks, dangers and hazards including, but not limited to: boarding, riding and disembarking ski lifts; changing weather conditions; exposed or hidden natural or man-made objects; avalanches; failure to ski or ride safely or within one's own ability; and negligence on the part of other skiers and boarders, the organization or their staff. I freely accept and fully assume all such risks and danger and the possibility of personal injury, death, property damage or loss, resulting therefrom.

Signature

Date

Signature

Date

Pacific Rim Trip Sign-Up Form

(You must be a current member to sign up for this trip— include Dues and Membership Application if not a member)

PRINTED NAME(S) _____

- Les Deux Alpes
 Big White
 Other

STREET ADDRESS _____

CITY _____

STATE _____

ZIP _____

HOME PHONE _____

FAX _____

E-MAIL _____

DEPOSIT DUE: \$400/ person for Les 2 Alpes, France OR \$100/ person for Big White, Canada

—SEND THIS FORM WITH YOUR DEPOSIT MADE OUT TO PACIFIC RIM ALLIANCE TO:

Gene Falkerson, 10818 Viacha Dr., San Diego, CA 92124

Pacific Rim Alliance

P.O. Box 420552
San Diego, CA 92124



First Class Mail



Spring – 2001

PACIFIC RIM

BOARD OF DIRECTORS

PRESIDENT .. Catherine Ohl

MEMBERSHIP .. Mo Burrows

TREASURER ... Patricia Ortiz

TRUSTEE.... Bernie Stanton

TRAVEL Gene Fulkerson



E-Mail us at info@pacificrimalliance.org

Mission Statement

The PACIFIC RIM ALLIANCE is a non-profit organization dedicated to the appreciation of skiing, snowboarding, sight-seeing, photography, travel, public affairs and civic awareness. The Alliance is further oriented to the building of international relations among skiers, snowboarders and sports organizations throughout the Pacific Rim. The Alliance is a member of San Diego Council, Los Angeles Council, Far West Ski Association.

Surplus moneys above requirements for deposits for future trips will be donated to non-profit organizations devoted to charity, research & education. We are especially interested in, but not limited to, supporting Ski Area Development, Adaptive Ski Programs, Jimmie Heuga Center and Olympic & Junior Racers.

FOR INFORMATION & FORMS, CONTACT—

- Catherine Ohl 310-538-5435 (voice e-mail)
ohl@acatmeowz.com (e-mail)
- Gene Fulkerson 858-467-9469 (eve)
858-565-6721 (fax)
gene@pacificrimalliance.org (email)
- Maureen Burrows..... 818-790-3576 (eve)
818-790-3411 (fax)
LuvMO@aol.com (e-mail)